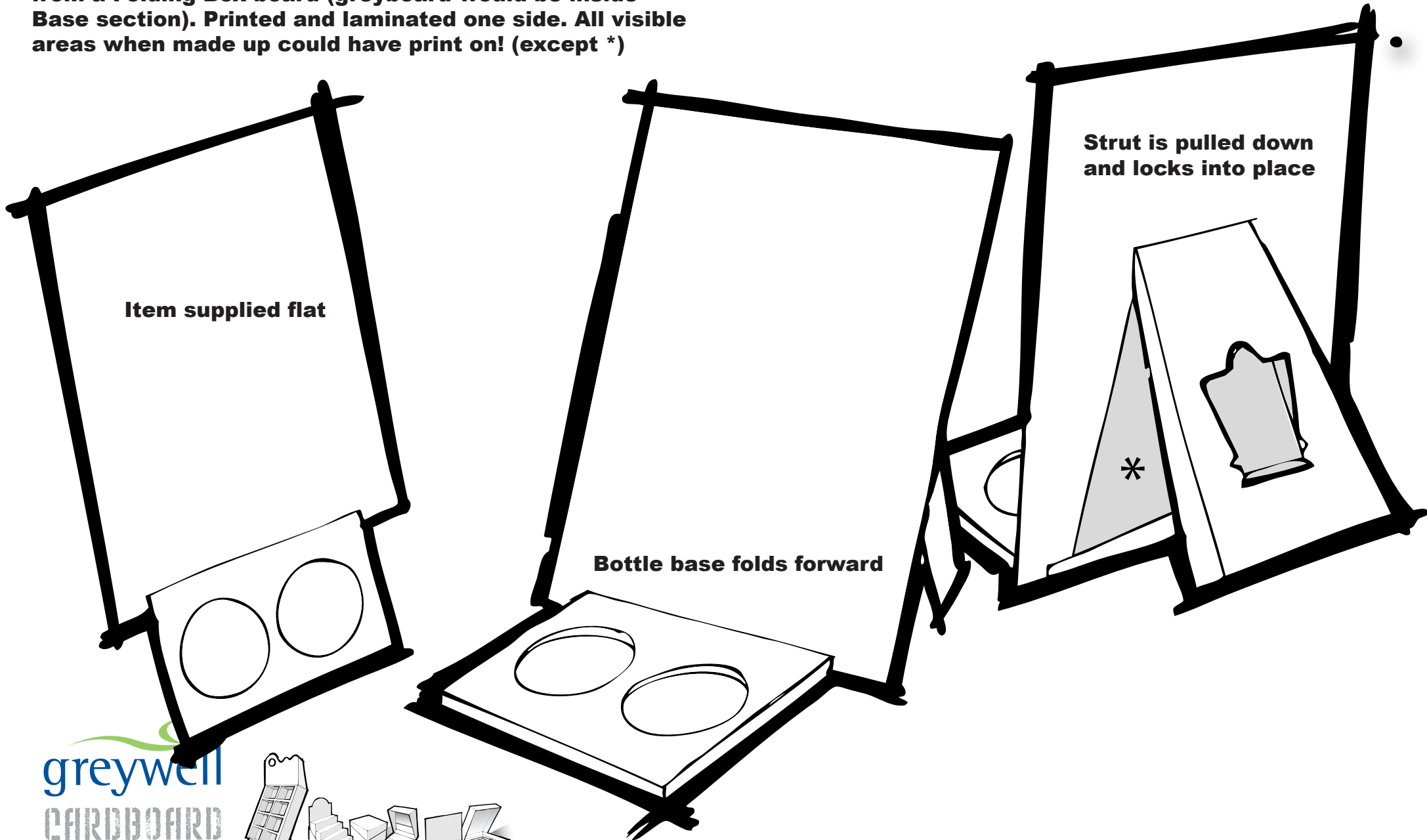
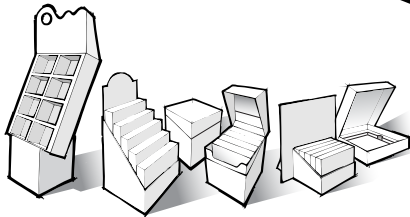


**This design allows us to produce the item from a Folding Box board (greyboard would be inside Base section). Printed and laminated one side. All visible areas when made up could have print on! (except \*)**



**greywell**  
CARDBOARD  
ENGINEERING



**01252 544221**

[www.greywell-cardboardengineering.co.uk](http://www.greywell-cardboardengineering.co.uk)