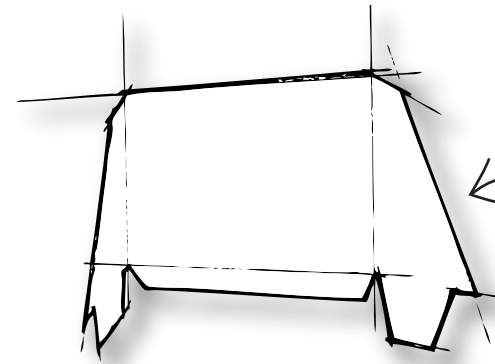
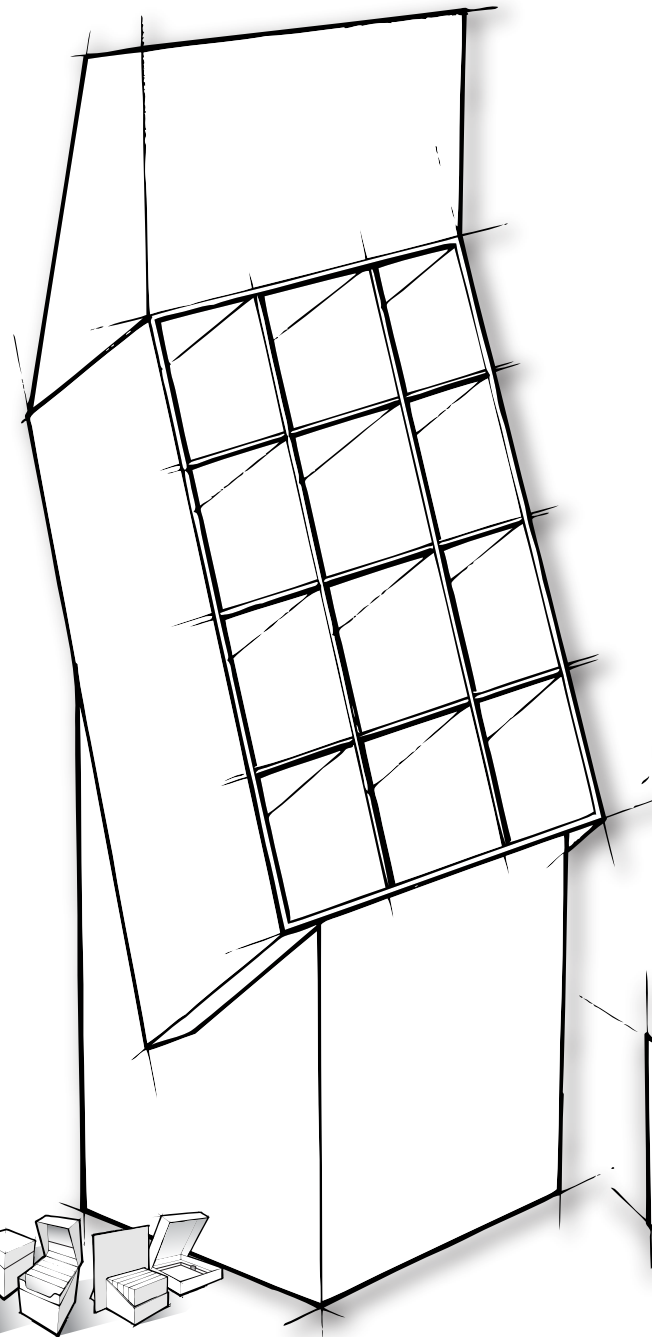
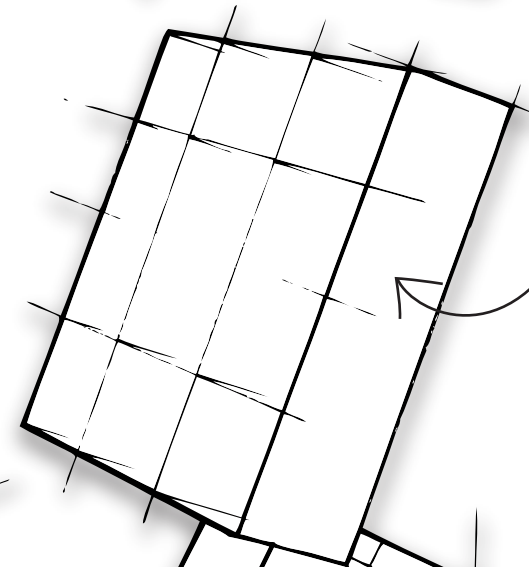


Free Standing Display Unit

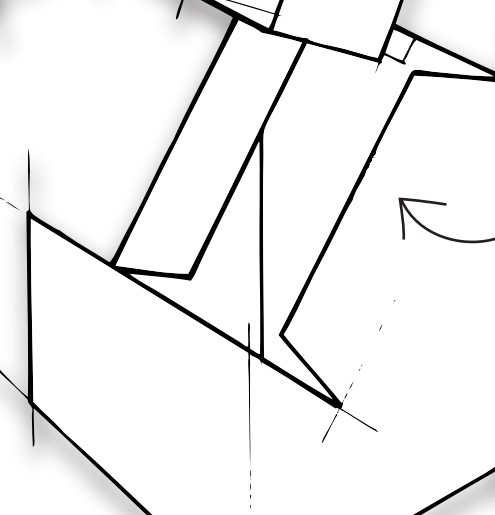


All 3 sections come packed inside an individual corrugated outer with assembly instructions

Header - Can be profiled. Assembled on-site - no gluing required



Tray - Comes pre-assembled and can even be preloaded with stock depending on size and weight. Capacity of dividers can be wider too if required



Base - Comes glued and packed flat tray simply locks into place

All sections can be printed, from a single flood colour, 2, 3, 4, 5, 6 colours.

Sketch is for style only and NOT proportion/angle/number of apertures etc

DESIGN

greywell

CARDBOARD
ENGINEERING

01252 544221

www.greywell-cardboardengineering.co.uk

